





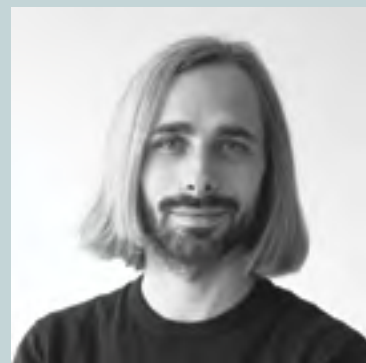
Contents

Baltic in the words of the designer	6
Baltic	10
Grace	18
Artiko	26
Agora	32
Afi	36
Sustainability	42
Stilt	46
Team	52
Frank	56
New School	60
Viga	68
Viga in the words of the designers	74
Ogi	78
Gravity	84
Valde	86
Ovo	88
Locker	90
Acoustics	94
Designers	96
Certificates	98



“The newest result of the years-long cooperation between Krystian Kowalski and .mdd is the Baltic 2 chair. The designer returns to the iconic Baltic family, awarded with the must have 2022 quality mark.”

Baltic in the words of the designer



Krystian Kowalski

As a hands-on designer my work process combines full-scale models and prototypes with technology research and advanced cad modeling. This methodical approach is focused on revealing the essence of each design. I believe experiencing the product is the only way to develop valuable furniture. Fundamentally, I look at design as an exercise in creating value.

What was the idea behind Baltic chairs?

K – The Baltic chair is the newest creation of my years-long cooperation with .mdd, a result of latest injection moulding technology implemented in the factory. The product is a result of the last six years of ongoing discussion and dialog about what products are worth implementing.

The dynamic growth of the factory is a source of inspiration for me. The form of the furniture I design requires the technology that the factory provides. It results in changes in the collections, new products, new materials and different production technologies used in the designs.

What drives you while designing furniture?

K – My intentions in designing furniture revolve around comfort and aesthetics that stimulate wellbeing. My goal, as the designer, is for the user to willingly choose my furniture. They must attract with the form and appearance, but it has to be verified with the comfort of use. As a result, my designs are characteristic and unique, but at the same time they are grounded in the everyday life. The form itself is never the priority – the function is much more important.



**Baltic 2 Soft Duo Chair
New School Table**

What were the features you wanted Baltic to have?

K – In the case of the Baltic chair, we wanted a product that would be versatile in use, which is why we have presented several finishes and bases for different spaces. By choosing the materials, the form can be matched to the context and the function you want it to have. Therefore, each Baltic can be tailored for the needs of the user. It is a chair for various spaces: offices, homes, gastronomy, even outdoors.

Apart from that, we wanted to use recycled materials from production and new materials. Our goal was also to enable it to be easily dismantled and recycled in the future.

Baltic was created based on above assumptions, but also with the awareness that there are many shell chair products on the market. So Baltic has to be well thought through in terms of ergonomics, but also differentiate itself with a distinctive look.

What was your design process with the Baltic family?

K – My design process is based on 3D modelling and manual work, I stay close to the technology and often use the newest innovations in my work. However, I work mainly manually, with both replacement (paper, styrofoam, resin) and final materials. I usually start working in a 3D program to quickly check the initial idea. Then I print the model in scale. The models are basic verification of the furniture size, but more importantly of initial comfort. The real verification of the concept comes with a 1:1 scale model, which I often build in the workshop in the studio.

What is the most important part of the design work for you?

K – Physical contact with the material is very important to me. Often the model is sculpted in polystyrene without any previous moulds. This is a purely sculptural approach that I have taken from my parents' sculptural background. This way has an advantage at the stage of working with fabrics and upholstery, refining the details. Also, the quality of the finished piece is a result of my personal care for each design. The technological process combined with craftsmanship attention provides the perfect fit of all the elements and a well-conceived form of the furniture. Such form reflects the function of the product, allowing for testing its proportions, comfort and functionality.

How are Baltics produced?

K – At the .mdd factory, even the mass produced pieces are full of personal care and attention. An employee assembles all components and finishes every piece of furniture with their own hands and with care. This human approach has its imprecisions, but enables for the furniture to be well tailored. This personal attention to detail and care for each individual product are essential to combine all elements and refine all parameters to create a good piece of furniture. That's where the future satisfaction of the user comes from.



Baltic 2 Classic Chair
Viga Conference Table

**“[...] human approach
has its imprecisions, but
enables for the furniture
to be well tailored.”**

Is that the end of the Baltics' journey?

K – Each of my designs, in this case a Baltic chair, has its own life, that does not end with the prototype. It has to constantly grow and excel. I am always working to refine them, even after my designs are implemented for production and for sale. Every time I see my furniture in showrooms or on photo shoots, I test their comfort and function, in order to improve their parameters, material or the technology. And to make sure they are as comfortable as possible.



Baltic



Baltic Soft Duo Chair

The Baltic family is comfortable but does not feel detached from everyday life. On the contrary, its practicality is exceeding expectations making it your obvious choice for daily activities. Baltic is a user oriented project that guarantees a diversity of use – from home office, conferences to relaxation and dining.





Chairs in the Baltic collection were designed with comfort of use in different contexts in mind. All seats are practical and convenient. Variations with soft pillows upholstered in high quality fabrics guarantee full relaxation.



Baltic 2 Classic Chair
Baltic Classic Chair

Baltic Remix Chair



Baltic Basic Chair

The manufacturing materials were selected with the natural environment in mind. Polypropylene can be easily obtained and reused from recycled materials as well as production waste. Both metal and wood used for manufacturing the shell chair components are well-known recyclable materials while the upholstery selection comprises several fabrics made from recycled post-consumer goods.



Baltic Basic Chair
Tack Table



Grace High Stool
Grace Chair

Grace



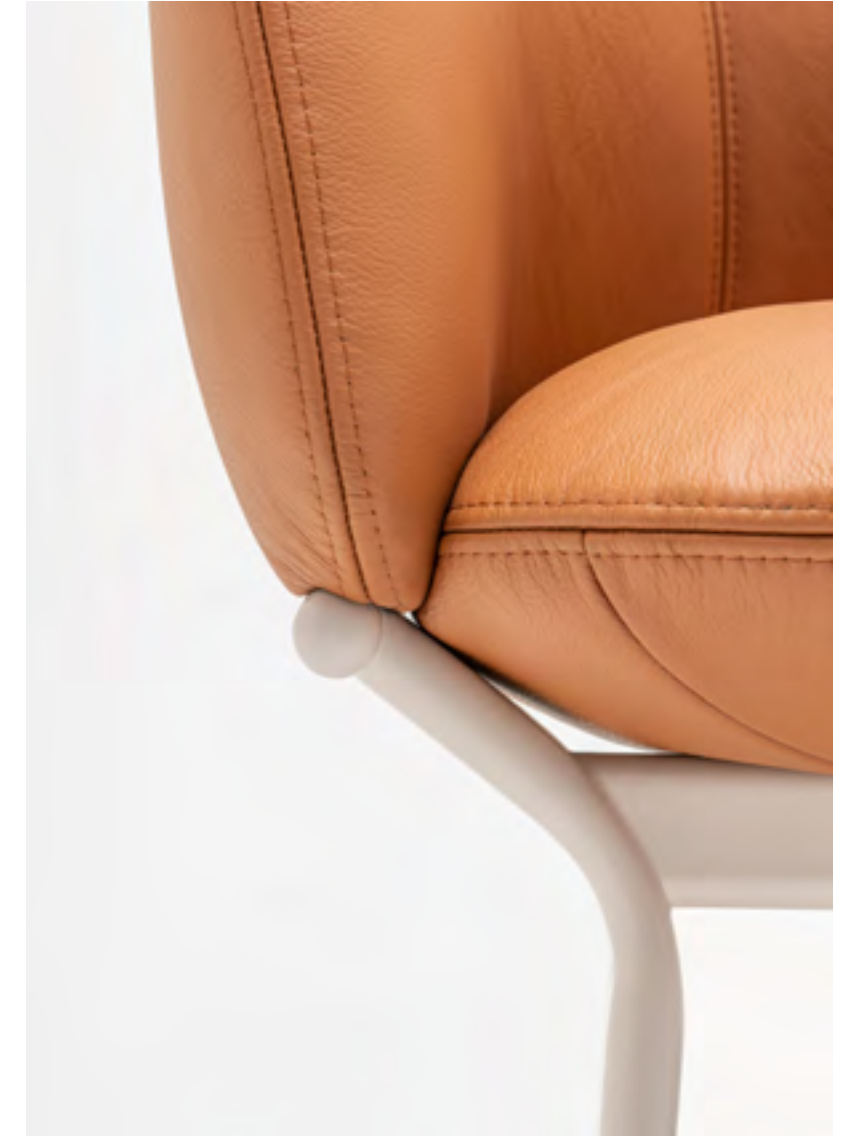
Grace Armchair

The function of the furniture, especially upholstered, has to include its comfort of use. Thus, it was the priority while designing the Grace collection. Closer attention has been paid to the shape of the backrests and the foam filling. As a result, the sculptural form of the chairs, armchairs, sofas and high stools invites to seat for a longer time.





Grace Chair
Tack Conference Table



Grace Armchair

The curved backrests of the chairs, armchairs, sofas and high stools wrap around the user, allowing them to rest comfortably. The furniture becomes a little relaxing space, no matter the surroundings. The seats, cast in the .mdd factory, are upholstered in high quality fabrics to enhance the feeling of comfort and softness even further.



Grace Chair
Stilt Bookcase

Krystian Kowalski's design process is closely bound with technology. The designer seeks inspiration in the possibilities of the factory and the properties of the material. The CNC and foam casting technologies have contributed to the final form of the Grace collection. As he is constantly trying to increase the comfort of his furniture, Krystian works on improving their features even after the premiere.





Artiko Sofa
Grace Coffee Table

Artiko



Artiko Sofa

In Esperanto, Artiko means "joint". Its elements are available in various shapes, with or without the backrest. Artiko modules can be joined in any number. From a pouf created by two segments, up to a snake-y sofa. As long as the corridor the seat can have any desired size. Due to that Artiko can be tailored to the space, regardless of its dimensions.



Artiko Double Sofa
Artiko Pouf

Thanks to its practical accessories, Artiko becomes a fully functional seating system. Tables and mediaboxes enable the user to charge their phone or laptop and to put aside their notes or a mug. Thus, Artiko will be great for meetings, working and learning sessions – both individual and group, and for waiting or taking a break.







Agora Seating System
Roll Pouf

Being comprised of five elements, it can serve as a bench, a shelf, a sofa or a combination of these units at the same time. With two seat types, tabletop and three-tiered shelving units to choose from, Agora embodies flexibility. Built on a tubular structure, it can be as long as you need it to be. Combine these square-shaped units and create any sitting area suited to the character and size of your space.



Agora Meeting Cubicle

The biggest advantage of Agora is the multiplicity of configurations. By selecting the required components, it is possible to come up with a straight or combined at a 90-degree angle layout that will meet all the expectations of its creator.



Agora Seating System
Stilt Bookcase



Afi Chair
New School Table

Afi



Afi Chair

Designed with utmost attention to detail and manufactured with the finest craftsmanship – Afi is the ultimate answer to a versatile chair. Its adaptiveness to the specificity of the surroundings makes it an obvious pick for hotels, medical centers, restaurants, offices, but also residential and public spaces.



Afi High Stool

Gudmundur Ludvik

I am intrigued by the balance between simplicity and complexity. Exploring challenges through multiple perspectives helps me in understanding and reducing them to the core and transforming into simple and intuitive solutions.



Afi Chair



Sustainability

Electrical power

In 2022 we are completing the investment of expanding solar panels by 1 mW of energy. This will give us an area of 10,000 m². The solar power will then be 200 kWp (kilowatt peak). Thanks to this investment, the generated energy will cover most of the energy demand for the factory in Sępólno Krajeńskie.

Incinerator

We have started the process of replacing the old furnaces with a new, environmentally friendly incinerator. The new furnaces will reduce the emission of harmful dust and gases thanks to the electrostatic precipitators used. The incinerator decreases the need to dispose parts of the waste that are used as raw material during the thermal transformation of wood-based panels. The investment has all the necessary environmental permits.

Transport

1/5 of the transports leaving the factory are return transports, which carry our waste. This aims to reduce any unnecessary exhaust emissions by making a full use of all scheduled transports and not sending out empty vehicles.

Thanks to the automatic warehouse of furniture boards, the internal trolley transport is reduced to the minimum. The distribution of the boards is carried out by an electrical robot arm.

Eco-friendly packaging

We have replaced styrofoam filling of our boxes with cardboard with a “honeycomb” cross-section. Furthermore, when larger quantities of the same product are ordered, we use bulk packaging to minimize consecutive waste. We can pack up to 4 chairs in one package.

In the case of lighter packages and those handled by a pallet courier, we have replaced classic wooden pallets with paper ones produced on site, in the factory. We are trying to limit the number of subcontractors, therefore our own cartoner helps us in the packaging process. The automated machine enables the optimization of the material consumption and generation of unnecessary waste.



Agora Seating System

“The absence of third-party logistics means a more straightforward approach when planning; the products are delivered directly to the customer, reducing not only timings but extra fuel used if third parties were involved.”

Regranulate

The injection moulded elements that do not meet our standards are converted into regranulate and later reused for following injection processes. An example of such elements is a bicoloured plastic seat obtained while changing the colour granules on the injection moulding machine. It will be either used in an upholstered chair or reground and reused in the production of new components. We are planning to fully automate processes of grinding and regranulation.

Machinery

The use of optimal fabric lamination technology and cutting technologies with machines like the Cutter, has significantly lowered the volume of the material waste and the amount needed to manufacture the goods. By using new machinery, the production complies with the highest energy usage standards, with an energy-saving mode prompting the systems into a “suspension” mode when not in use.

Powder-coating room

Thanks to the use of powder paints, we have reduced the emission of volatile organic compounds to a minimum. In addition, the powder coating process allows us to recover up to 95% of the raw material that wasn't used, as it is collected and used for the following painting sessions. We have also introduced a new type of powder, that has enabled us to consume less electricity, thanks to lower baking temperatures of the painted elements.

“All .mdd products have been checked for environmental and health regulations. No forbidden hazardous chemicals (in accordance to REACH) have been used during the production process, guaranteeing it's safe to use.”





Stilt High Backed Armchair
Stilt Bookcase



Stilt Low Backed Sofa
Roll Coffee Table

The practicality of the office-oriented furniture and the warmth of a domestic ambiance. Stilt brings what's best of the two worlds, resulting in superior adaptability in a wide range of interiors. The range includes modular bookcases, comfortable sofas and armchairs, as well as practical poufs.



Stilt Low Backed Armchair

Form Us With Love

Good design is a hard question—it's in the eye of the beholder. However, if you can get the raw materials right, both for the interior and the product, then you are close.



Stilt Low Backed Armchair



Team

Team High Stool
Ogi High Table

Dirk Winkel was inspired by geometrical purism. This approach has allowed him to create a form that instantly matches interiors in different styles. Team is a collection of seats with various functions: chairs, stools and benches. They are all characterized by delicate lines, integrated backrest and sleek base.



Team High Bench

Dirk Winkel

I love exploring new materials
and production processes.
I am driven by belief in
the beauty of a deeply
geometrical formal purism.
Careful consideration of
every single radius, dimension
and proportion of a design
is the key to a sustainable
formal expression.



Team High Stool
Team Plastic Chair



Fat Frank Armchair

Frank



Frank Armchair

Quality workmanship and maximum comfort – Frank armchair was created in accordance with the ergonomic principles to create an atmosphere of domestic freedom in the office space. The well-thought design allowed preserving the convenience of an office armchair in a minimalistic form.





New School High Stool
Baltic 2 Classic Chair

New School



New School High Stool

Collection created out of nostalgia. Form Us With Love Design Studio was inspired by the familiar form of a traditional school chair. Its frame made of bent tubes was a starting point for a series of modern chairs and modular tables. Steel and veneer used in the projects are at the same time practical and familiar.



New School Chair
Viga Desk

By choosing an actuator base, headrest and armrests, the chair becomes a functional seat for work, both at home and in the office. The New School table can be used as a stylish desk.



New School Chair
Tack Table



New School Table
Baltic 2 Soft Duo Chair

New School



New School Table
Baltic Basic Chair

Form Us With Love Studio has designed the New School tables to complement the chair collection. The designers introduced a tubular metal structure as a feature common to all New School products. The simple forms and intense colours of the tables have been created with the interiors they will be placed in in mind, making them adaptable to different spaces. The table series includes a desk, a conference table and a bistro table.



New School Table

The idea behind the New School collection is versatility and multi-contextuality. The designers wanted to create one aesthetic, that can be configured to fit into different spaces and functions.

New School High Table
Grace High Stool



Viga Conference Table
Ulti Chair

Viga



Viga Desk

Stepping aside from trends, the idea behind the Viga family has always been providing both, private users and companies, the perfect environment for a redefined workspace. Alex and Clara, the minds behind Yonoh Studio, wanted to create an entirely new system keeping versatility and adaptiveness in mind.



Viga Executive Desk

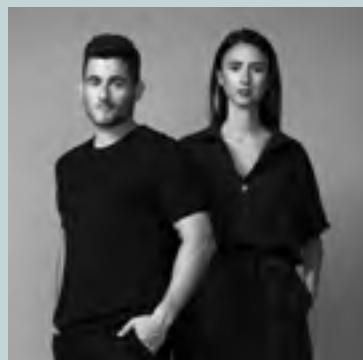
With a strong beam at the core of the design providing stability and lightness, the entire family can grow and develop. Featuring a straight, rectangular worktop on elegant and sturdy wooden legs, these tables get rid of any unnecessary elements and are back to the basics: a useful and comfortable space.

Viga Desk
Baltic Soft Duo Chair



“The Viga collection is the latest creation of Yonoh Studio, made in collaboration with .mdd. Stepping aside from trends, the idea behind this furniture family has always been providing both private users and companies, the perfect environment for a redefined workspace.”

Viga in the words of the designers



Yonoh Studio

Moved by sensations and intuition, Yonoh stays away from trends in order to stay true to its own voice: the one that keeps creative independence and honesty as its core values.

What was the inspiration behind the Viga family?

Y – Working with .mdd, we wanted to do something really different to what we have done before. We wanted to create an entirely new office furniture system. All the time, we kept versatility and adaptiveness in our minds. We have noticed that nowadays, static and monolithic environments feel a bit old. Modern companies – and therefore users – are swiftly shifting to more hybrid territories: at the office they want to feel as comfortable as at home, and at home they need functionality of an office. They invite a lot of warm light, soft fabrics and natural materials into the office, and arrange more professional working stations at homes. With Viga, we wanted to create furniture that is at the same time user-friendly and functional, and that can be arranged in offices and at homes.

To achieve that, we wanted to bring the best of both worlds to the collection. As a result, Viga seamlessly combines the warmth of wood with the industrial lines of extruded aluminum. The beam compliments wooden finishes, and from here, the whole family grows and develops.



Viga Conference Table
Ultra Chair

What drives you while designing furniture?

Y – Our inspiration has many sources. The most important one is our constant work. We both believe in the meticulous study of every small feature. We usually like to take small ideas or concepts of various themes, such as nature or architecture, and intermingle them together. Our main influences are the Spanish culture and Mediterranean way of living: close to the sea, in the warmth of the sun. We want to incorporate this feeling into our designs, but we are also inspired by other design styles, such as the functionality of the Scandinavian furniture. Our design philosophy is simplicity, innovation and originality. We try to stray from extravagance to create functional designs.

What were the features you wanted Viga to have?

Y – The aim of the project was modularity and refined details. The whole collection revolves around one strong, core element made of extruded aluminum. A central piece that we attached other elements to. From there we tried to find shapes we really liked, and felt they are “Yonoh” shapes – true to our design style.

To emphasize modularity, every piece in the collection comes in various sizes. As a whole, Viga displays great customizability and unlimited options for a professional workspace, be it at home or in the office. It is further enhanced by the combination of warm wood and raw aluminum. Desks and tables in the collection can be equipped with various storage options and practical accessories that maximize the user experience. It is impressive, how that simple structure of the beam supports a whole table. For us, it is the most distinctive feature of Viga.

What is your design process?

Y – In fact, as we are a duo, we have two different ways of working, but we managed to develop a methodology that combines them both. We do not really flirt with trends, and popular aesthetics. Each new design starts with a briefing from a company we want to collaborate with. We read the briefing carefully to establish what is needed. Then we do a bit of research – we check what is already on the market, what the company has in the offer and what are its possibilities. We can find much inspiration in that. We try to stay relaxed and wait for the right idea we are confident in. Then we start the creative process of developing it into the design and refining it.

What we also do, is design for ourselves, “for the drawer”. We find ideas and inspiration in almost everything we come across in our everyday lives. Driven by that, we make little designs, conceptual drawings – just quick sketches of the idea that appeared. Later, when we are working on a briefing, we come back to those concepts, checking if there maybe already is something that will match the needs and parameters of the project and work on it, to develop a refined design.



Viga Conference Table
Ultra Chair

“We find ideas and inspiration in almost everything we come across in our everyday lives.”

How was working with .mdd for you?

Y – We have known .mdd for a while and followed their products and development with interest. When we approached one another, both parties immediately saw the opportunity to start working together. This cooperation allowed us to design something new, something we were not able to do before. And although it was quite a challenge for us, we’ve had a lot of help from the .mdd team. Thanks to that, we felt confident we can do a challenging product, much bigger than our previous works. It was a challenge to design a big collection without any compromise on its functionality. It was also our first time using extruded aluminum, so we had to learn about the material as well. We were very impressed by how fast the .mdd team works and how quickly the design was developed in the factory.



Ogi Drive Desk
Evo Office Chair

Ogi



Ogi B Desk

The office desks intended for modern spaces as well as those that design is closely related to the home environment. Available in a wide range of variants. This way, it is possible to arrange workplaces of various characters. Electric desks, for instance, fit both classic and modern interiors. Those desks allow working in a sit/stand mode. The enthusiasts of classic solutions are able to select between traditional desks. Each model stands out with its workmanship and high quality of materials to support multitasking.



Standard Pedestal

Mobile pedestal with a metal drawer is essential to arrange an ergonomic workspace. Its universal design allows placing it in practically any arrangement. Hardwearing metal drawers help to store numerous documents and accessories. Thanks to the various configurations, the pedestals can be used in either large modern offices or small home office spaces.

Ogi B Desk
Baltic Soft Duo Chair



Ogi Drive Bench Desk
Sonic acoustic desk panels

Desks with an electrical height adjustment system integrated with an anti-collision system. To guarantee complete safety, Ogi Drive range has double level of security through integrated counterweight and a gyroscope. As all other components, the system is rigorously tested, making it a reliable height adjustable desk range.



Ogi U Desk
Evo Office Chair



Gravity Executive Cabinet
Ultra Chair



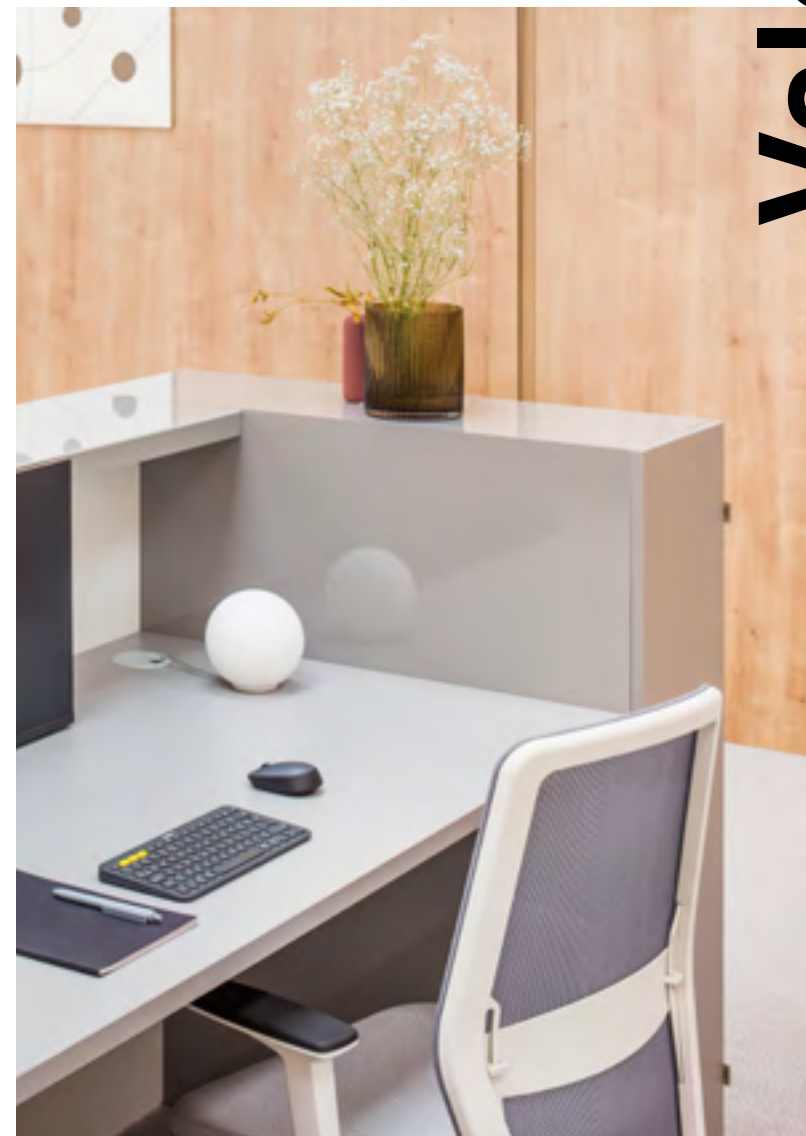
Gravity Executive Desk
Sava Office Chair

Firm and comfortable, despite the gravity – Gravity takes the idea of the executive desk to a whole new level. Minimalistic form, inspired by modern architecture, has been integrated with technology. Large top situated on a single fulcrum and the invisible supporting structure brings into mind a floating surface, whereas an electrically adjustable worktop allows ergonomic work and a smooth transition from sitting to standing position.



Valde Modular Reception Desk
Evo Office Chair

Valde



Valde Modular Reception Desk
Evo Office Chair

Modern character and dynamic form – Valde reception desk was designed to meet the requirements of a contemporary reception. A visually attractive combination of glass, aluminum and high gloss laminates creates an elegant, but not overwhelming whole. Modular construction allows to freely customize and extend the layouts.



Ovo Compact Reception Desk
Mix Wall Panel

Ovo



Ovo Compact Reception Desk

Small, but providing maximum practicality – Ovo reception desk is optimally combining features of a customer service stand and an individual workstation. The oval top is at the same time fulfilling a role of a worktop and a lower element of the reception. The higher part allows working in a standing position, simultaneously hiding the computer station and the document shelf. Ovo is a space saving solution that will fit perfectly for many interiors.



Locker Cabinet
Ogi M Desk



Locker Cabinet

Locker-type cabinets were designed as a multifunctional piece of furniture. Depending on the needs of the user, the cabinets can function as name-tagged lockers for personal belongings of the employees in the office or a co-working center or storage system for archives. What is more, they can also be used as a tool for effective correspondence management.

Locker

Acoustics

As the manufacturer of office furniture, we are aware of the need for quiet spots in the workspace – and in many other crowded places. To fulfill this requirement of the market, our offer consists of a few acoustic products, the flagship one of which are the office booths. They are complimented by meeting cubicles and acoustic screens, available in numerous options. With that included, our offer is tailored for offices, coworking spaces, libraries, universities and public spaces, such as airports, train stations, hotel lobbies and other big halls.

The A-class technology

To maximize the acoustic properties of our products, we have developed our own production technology, Sonic. Its sandwich construction consists of carefully matched layers. The chipboard frame shelters the acoustic nonwoven filling with high absorption and dispersion properties. Together, they are upholstered in high quality fabrics, that further enhance the attributes of the whole. The acoustic absorption of the Sonic technology is proven with the A-class certificate, tested in accordance with the PN-EN ISO 354:2005.

The abundance of screens

The Sonic technology has found application in various products from our offer, with the primary one being the acoustic screens, that can effectively improve the conditions of the interior they are situated in. Amongst all the collections: Sonic, Twin, Mix, Viva, and Bazalto, the screens come in numerous models – suitable for walls, ceilings and desks, as well as freestanding. Further, there is a variety of shapes and sizes, and a wide range of upholstery fabrics. As such, the panels become a versatile tool for finishing the arrangement in office, commercial and residential interiors. Rectangular, triangular, square, and circular screens in many colours enable the users to create remarkable patterns limited only by their creativity.



Hana Compact Acoustic Booth
Twin Desk Panels

“Acoustic products constitute an important part of the .mdd offer. Booths and panels will fit offices and public spaces – wherever the noise may hinder conversations.”



“The aim of our acoustic booths is to provide silence and privacy even in crowded and noisy open spaces, such as offices and public places.”

The quiet pods

Office booths are for sure our flagship acoustic product. They are available in two models, Hana and Hako, both with walls made in the sandwich construction with an acoustic filling and sound-absorbing upholstery. The absorption level of the booths is around 25,7 dB, which was proven by an ISO 23351-1:2020 examination. To ensure optimal conditions inside, both models are equipped with automatic light and ventilation systems, and their glass walls provide daylight and eye contact with the surroundings while cutting the noise off. Accommodating up to six people, the booths allow the user to have meetings, telephone and video calls and to focus on their tasks. Apart from that, our acoustic pods are an easy way to designate the space without building permanent walls. Available in various sizes, they can fit into open spaces, traffic routes and public interiors. Modular Hako can be adjusted to the needs of the users, creating telephone booths or conference rooms for them. However, if even a smaller option is needed, the compact Hana comes to the rescue.

The meeting zone

Last, but not least, .mdd's acoustic offer is completed with meeting cubicles. With them, we've created a space for discussions and teamwork - even in a noisy environment. There are two variations available, Agora and Kaiva, both based on our modular seating systems. Our known seating systems have been combined with freestanding acoustic screens, made in the Sonic technology. The panels shelter the users in a cozy pod. As a result, they became a perfect, muted zone to talk, work or relax. Designed for public spaces, such as waiting rooms or big transport hubs, they are a hybrid between an acoustic booth and an open pod.

Designers



Gudmundur Ludvik

I am intrigued by the balance between simplicity and complexity. Exploring challenges through multiple perspectives helps me in understanding and reducing them to the core and transforming into simple and intuitive solutions.



Dirk Winkel

I love exploring new materials and production processes, and I am driven by belief in the beauty of a deeply geometrical formal purism. Careful consideration of every single radius, dimension and proportion of a design is the key to a sustainable formal expression.



Form Us With Love

Good design is a hard question—it's in the eye of the beholder. However, if you can get the raw materials right, both for the interior and the product, then you are close.



Krystian Kowalski

As a hands-on designer my work process combines full-scale models and prototypes with technology research and advanced cad modeling. This methodical approach is focused on revealing the essence of each design. I believe experiencing the product is the only way to develop valuable furniture.



Javier Cuñado

In a smart working environment, each team member should be supported to improve their efficiency.



Yonoh Studio

Moved by sensations and intuition, Yonoh stays away from trends in order to stay true to its own voice: the one that keeps creative independence and honesty as its core values.



Andreas Krob

A good office chair should be intuitive in how it's used.



Dymitr Malcew

I'm inspired by things that happen on the periphery and at the intersection of disciplines, cultures and experiences. Regardless of the scale, form or style of the product, designing "experiences" is always the priority. Frame, material and detail is a form of communication with the user.

Certificates



