

Product sheet

Ramp

coffee table



Technical Data

- Tabletop – MDF board, 19 mm, veneered, colour: natural oak, black oak, according to the colour of the frame;
- Base – wooden legs and frame, 60 x 30 mm, colour: natural oak, black oak;
- Plastic feet with felt

Selected configuration

RMP15S**Height:** 370 mm**Width:** 975 mm**Length:** 650 mm**Colour of the frame:** Natural oak veneer

Sustainability

- Wood used in the production of .mdd furniture is acquired from FSC-certified producers.

Material composition & packaging

- MDF: 15%
- Natural veneer: 13%
- Wood: 30%
- Steel: 28%
- Plastic: 2%
- Cardboard: 13%

*average values for a representative of the group.

Guarantee

.mdd products – 5 years.

Electrical components – 2 years.

Assembly manuals



Recycled content

4%

Recyclability

- Recycling: 10%
- Downcycling: 90%

*average values for a representative of the group.

Packaging

Materials: cardboard + foil

Recyclability: 100%

Product sheet

Ramp

coffee table

Technical Data

- Tabletop – MDF board, 19 mm, veneered, colour: natural oak, black oak, according to the colour of the frame;
- Base – wooden legs and frame, 60 x 30 mm, colour: natural oak, black oak;
- Plastic feet with felt

Selected configuration

RMP15S**Height:** 370 mm**Width:** 975 mm**Length:** 650 mm**Colour of the frame:** Natural oak veneer

Sustainability

- Wood used in the production of .mdd furniture is acquired from FSC-certified producers.

Material composition & packaging

- MDF: 15%
- Natural veneer: 13%
- Wood: 30%
- Steel: 28%
- Plastic: 2%
- Cardboard: 13%

*average values for a representative of the group.



Guarantee

.mdd products – 5 years.

Electrical components – 2 years.

Assembly manuals



Recycled content

4%

Recyclability

- Recycling: 10%
- Downcycling: 90%

*average values for a representative of the group.

Packaging

Materials: cardboard + foil

Recyclability: 100%

Product sheet

Ramp

bench

Technical Data

- Tabletop – MDF board, 19 mm, veneered, colour: natural oak, black oak, according to the colour of the frame;
- Seat, backrest – plywood frame, cut foam with a density of 35 kg/m³, upholstered;
- Base – wooden legs and frame, 60 x 30 mm, colour: natural oak, black oak;
- Plastic feet with felt

Selected configuration

RMP151**Height:** 450 mm**Width:** 975 mm**Length:** 650 mm**Colour of the seat:** M-63017 Rusty**Colour of the frame:** Natural oak veneer

Sustainability

- Some of the available upholstery fabrics are made from recycled materials.
- Wood used in the production of .mdd furniture is acquired from FSC-certified producers.

Material composition & packaging



Guarantee

.mdd products – 5 years.

Electrical components – 2 years.

Assembly manuals



- MDF: 10%
- Natural veneer: 7%
- Wood: 19%
- Plywood: 7%
- Steel: 31%
- Plastic: 1%
- Fabric: 10%
- Polyurethane foam: 3%
- Cardboard: 10%

*average values for a representative of the group.

Recycled content

4%

Recyclability

- Recycling: 10%
- Downcycling: 90%

*average values for a representative of the group.

Packaging

Materials: cardboard + foil
 Recyclability: 100%

Fabric technical data

M-63017 Rusty



Material	100% polyester
Weight	364g/m2 • 510g/lm
Abrasion resistance rubs	75,000 Martindale cycles; 100,000 double rubs wyzenbeek ASTM D4157
Pilling resistance	scale 1-5, max 5 • EN ISO 12945-2 4
Colour fastness to light	scale 1-8, max 8 • EN ISO 105 - B02 5-7
Colour fastness to rubbing	scale 1-5, max 5 • EN ISO 105x12 (wet/dry) 4-5/4-5
Acoustic test sound absorption	ISO 354
Flammability	BS EN 1021 - 1:2006 (cigarette), BS EN 1021 - 2:2006 California Bulletin CAL 117-E-Class 1
Fabric manufacturer's warranty	10 years

Product sheet

Ramp

bench

Technical Data

- Tabletop – MDF board, 19 mm, veneered, colour: natural oak, black oak, according to the colour of the frame;
- Seat, backrest – plywood frame, cut foam with a density of 35 kg/m³, upholstered;
- Base – wooden legs and frame, 60 x 30 mm, colour: natural oak, black oak;
- Plastic feet with felt

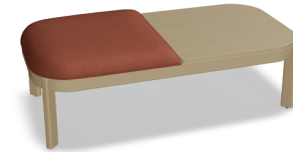
Selected configuration

RMP221**Height:** 450 mm**Width:** 1300 mm**Length:** 650 mm**Colour of the seat:** M-63017 Rusty**Colour of the frame:** Natural oak veneer

Sustainability

- Some of the available upholstery fabrics are made from recycled materials.
- Wood used in the production of .mdd furniture is acquired from FSC-certified producers.

Material composition & packaging



Guarantee

.mdd products – 5 years.

Electrical components – 2 years.

Assembly manuals



- MDF: 10%
- Natural veneer: 7%
- Wood: 19%
- Plywood: 7%
- Steel: 31%
- Plastic: 1%
- Fabric: 10%
- Polyurethane foam: 3%
- Cardboard: 10%

*average values for a representative of the group.

Recycled content

4%

Recyclability

- Recycling: 10%
- Downcycling: 90%

*average values for a representative of the group.

Packaging

Materials: cardboard + foil
 Recyclability: 100%

Fabric technical data

M-63017 Rusty



Material	100% polyester
Weight	364g/m2 • 510g/lm
Abrasion resistance rubs	75,000 Martindale cycles; 100,000 double rubs wyzenbeek ASTM D4157
Pilling resistance	scale 1-5, max 5 • EN ISO 12945-2 4
Colour fastness to light	scale 1-8, max 8 • EN ISO 105 - B02 5-7
Colour fastness to rubbing	scale 1-5, max 5 • EN ISO 105x12 (wet/dry) 4-5/4-5
Acoustic test sound absorption	ISO 354
Flammability	BS EN 1021 - 1:2006 (cigarette), BS EN 1021 - 2:2006 California Bulletin CAL 117-E-Class 1
Fabric manufacturer's warranty	10 years

Product sheet

Ramp

bench

Technical Data

- Tabletop – MDF board, 19 mm, veneered, colour: natural oak, black oak, according to the colour of the frame;
- Seat, backrest – plywood frame, cut foam with a density of 35 kg/m³, upholstered;
- Base – wooden legs and frame, 60 x 30 mm, colour: natural oak, black oak;
- Plastic feet with felt

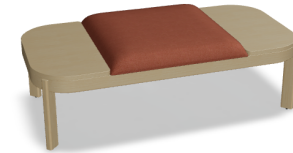
Selected configuration

RMP211**Height:** 450 mm**Width:** 1300 mm**Length:** 650 mm**Colour of the seat:** M-63017 Rusty**Colour of the frame:** Natural oak veneer

Sustainability

- Some of the available upholstery fabrics are made from recycled materials.
- Wood used in the production of .mdd furniture is acquired from FSC-certified producers.

Material composition & packaging



Guarantee

.mdd products – 5 years.

Electrical components – 2 years.

Assembly manuals



- MDF: 10%
- Natural veneer: 7%
- Wood: 19%
- Plywood: 7%
- Steel: 31%
- Plastic: 1%
- Fabric: 10%
- Polyurethane foam: 3%
- Cardboard: 10%

*average values for a representative of the group.

Recycled content

4%

Recyclability

- Recycling: 10%
- Downcycling: 90%

*average values for a representative of the group.

Packaging

Materials: cardboard + foil
 Recyclability: 100%

Fabric technical data

M-63017 Rusty



Material	100% polyester
Weight	364g/m2 • 510g/lm
Abrasion resistance rubs	75,000 Martindale cycles; 100,000 double rubs wyzenbeek ASTM D4157
Pilling resistance	scale 1-5, max 5 • EN ISO 12945-2 4
Colour fastness to light	scale 1-8, max 8 • EN ISO 105 - B02 5-7
Colour fastness to rubbing	scale 1-5, max 5 • EN ISO 105x12 (wet/dry) 4-5/4-5
Acoustic test sound absorption	ISO 354
Flammability	BS EN 1021 - 1:2006 (cigarette), BS EN 1021 - 2:2006 California Bulletin CAL 117-E-Class 1
Fabric manufacturer's warranty	10 years

Ramp

bench

Technical Data

- Tabletop – MDF board, 19 mm, veneered, colour: natural oak, black oak, according to the colour of the frame;
- Seat, backrest – plywood frame, cut foam with a density of 35 kg/m³, upholstered;
- Base – wooden legs and frame, 60 x 30 mm, colour: natural oak, black oak;
- Plastic feet with felt

Selected configuration

RMP231

Height: 450 mm

Width: 1300 mm

Length: 650 mm

Colour of the seat: M-63017 Rusty

Colour of the frame: Natural oak veneer

Sustainability

- Some of the available upholstery fabrics are made from recycled materials.
- Wood used in the production of .mdd furniture is acquired from FSC-certified producers.

Material composition & packaging



Guarantee

.mdd products – 5 years.

Electrical components – 2 years.

Assembly manuals



- MDF: 10%
- Natural veneer: 7%
- Wood: 19%
- Plywood: 7%
- Steel: 31%
- Plastic: 1%
- Fabric: 10%
- Polyurethane foam: 3%
- Cardboard: 10%

*average values for a representative of the group.

Recycled content

4%

Recyclability

- Recycling: 10%
- Downcycling: 90%

*average values for a representative of the group.

Packaging

Materials: cardboard + foil

Recyclability: 100%

Fabric technical data

M-63017 Rusty



Material	100% polyester
Weight	364g/m2 • 510g/lm
Abrasion resistance rubs	75,000 Martindale cycles; 100,000 double rubs wyzenbeek ASTM D4157
Pilling resistance	scale 1-5, max 5 • EN ISO 12945-2 4
Colour fastness to light	scale 1-8, max 8 • EN ISO 105 - B02 5-7
Colour fastness to rubbing	scale 1-5, max 5 • EN ISO 105x12 (wet/dry) 4-5/4-5
Acoustic test sound absorption	ISO 354
Flammability	BS EN 1021 - 1:2006 (cigarette), BS EN 1021 - 2:2006 California Bulletin CAL 117-E-Class 1
Fabric manufacturer's warranty	10 years

Product sheet

Ramp

bench

Technical Data

- Tabletop – MDF board, 19 mm, veneered, colour: natural oak, black oak, according to the colour of the frame;
- Seat, backrest – plywood frame, cut foam with a density of 35 kg/m³, upholstered;
- Base – wooden legs and frame, 60 x 30 mm, colour: natural oak, black oak;
- Plastic feet with felt

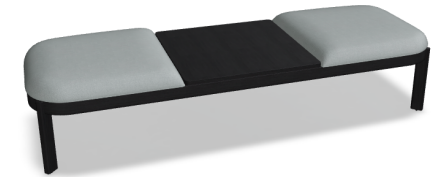
Selected configuration

RMP313**Height:** 450 mm**Width:** 1950 mm**Length:** 650 mm**Colour of the seat:** M-60003 Light grey**Colour of the frame:** Black oak veneer

Sustainability

- Some of the available upholstery fabrics are made from recycled materials.
- Wood used in the production of .mdd furniture is acquired from FSC-certified producers.

Material composition & packaging



Guarantee

.mdd products – 5 years.

Electrical components – 2 years.

Assembly manuals



- MDF: 10%
- Natural veneer: 7%
- Wood: 19%
- Plywood: 7%
- Steel: 31%
- Plastic: 1%
- Fabric: 10%
- Polyurethane foam: 3%
- Cardboard: 10%

*average values for a representative of the group.

Recycled content

4%

Recyclability

- Recycling: 10%
- Downcycling: 90%

*average values for a representative of the group.

Packaging

Materials: cardboard + foil
 Recyclability: 100%

Fabric technical data

M-60003 Light grey



Material	100% polyester
Weight	364g/m2 • 510g/lm
Abrasion resistance rubs	75,000 Martindale cycles; 100,000 double rubs wyzenbeek ASTM D4157
Pilling resistance	scale 1-5, max 5 • EN ISO 12945-2 4
Colour fastness to light	scale 1-8, max 8 • EN ISO 105 - B02 5-7
Colour fastness to rubbing	scale 1-5, max 5 • EN ISO 105x12 (wet/dry) 4-5/4-5
Acoustic test sound absorption	ISO 354
Flammability	BS EN 1021 - 1:2006 (cigarette), BS EN 1021 - 2:2006 California Bulletin CAL 117-E-Class 1
Fabric manufacturer's warranty	10 years

Product sheet

Ramp

bench

Technical Data

- Tabletop – MDF board, 19 mm, veneered, colour: natural oak, black oak, according to the colour of the frame;
- Seat, backrest – plywood frame, cut foam with a density of 35 kg/m³, upholstered;
- Base – wooden legs and frame, 60 x 30 mm, colour: natural oak, black oak;
- Plastic feet with felt

Selected configuration

RMP311

Height: 450 mm

Width: 1950 mm

Length: 650 mm

Colour of the seat: M-60003 Light grey

Colour of the frame: Black oak veneer

Sustainability

- Some of the available upholstery fabrics are made from recycled materials.
- Wood used in the production of .mdd furniture is acquired from FSC-certified producers.

Material composition & packaging



Guarantee

.mdd products – 5 years.

Electrical components – 2 years.

Assembly manuals



- MDF: 10%
- Natural veneer: 7%
- Wood: 19%
- Plywood: 7%
- Steel: 31%
- Plastic: 1%
- Fabric: 10%
- Polyurethane foam: 3%
- Cardboard: 10%

*average values for a representative of the group.

Recycled content

4%

Recyclability

- Recycling: 10%
- Downcycling: 90%

*average values for a representative of the group.

Packaging

Materials: cardboard + foil
 Recyclability: 100%

Fabric technical data

M-60003 Light grey



Material	100% polyester
Weight	364g/m2 • 510g/lm
Abrasion resistance rubs	75,000 Martindale cycles; 100,000 double rubs wyzenbeek ASTM D4157
Pilling resistance	scale 1-5, max 5 • EN ISO 12945-2 4
Colour fastness to light	scale 1-8, max 8 • EN ISO 105 - B02 5-7
Colour fastness to rubbing	scale 1-5, max 5 • EN ISO 105x12 (wet/dry) 4-5/4-5
Acoustic test sound absorption	ISO 354
Flammability	BS EN 1021 - 1:2006 (cigarette), BS EN 1021 - 2:2006 California Bulletin CAL 117-E-Class 1
Fabric manufacturer's warranty	10 years

Omega Ekspress SIA

LV40003402577

Biroja adrese: Lāčplēša 125, LV-1003, Rīga

www.city-office.lv

info@city-office.lv