

# Cool technical specification



.mdd

**.mdd has a leading position among manufacturers of office furniture with many awards that prove quality and continuously increase demand for it's products.**

The realities of today`s market require constant quality improvement at all levels of modern organization. This applies in particular to customer service, marketing, quality of products and also to quality of processes within the company. Partnership relations among employees and with business partners form a base of economic growth and success of the company.

Constant investments in innovative machinery park, optimization of managment systems and an expansion of production halls allow to minimize the lead times for the product of the highest quality.

**More than twenty years of experience in office furniture industry come with reference from a long list of companies and institutions to show their appreciation for an efficient and comprehensive service.**

**.mdd is hgily aware of the environment.**

Being located in the forest region with lake by itis side, .mdd takes the nature seriously and invests constantly in a modern and energy-efficient solutions to preserve the local life. Company puts emphasis on waste segregation and recycling. .mdd has been awarded for the exceptional care and involvement in waste disposal. All materials used are environmentally friendly and enjoy a high 95 % rate of being recycled.



## General informations:

### Warranty:

.mdd products - **5 years**.  
Electrical components and  
fabric - **2 years**.

### Assembly:

the product comes pre-assembled

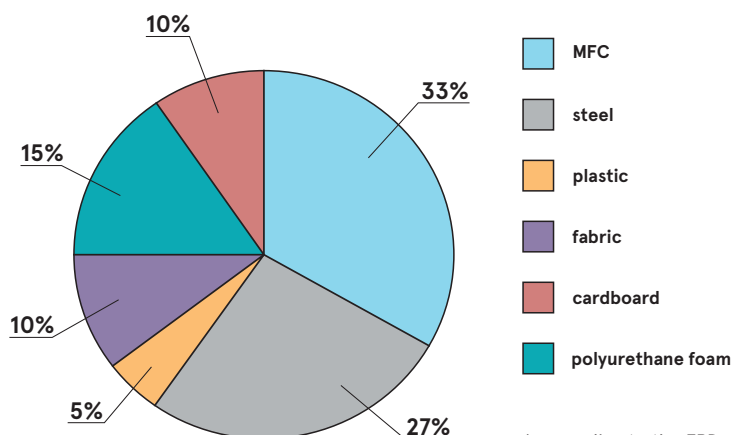
### Packing:

cardboard

### Certificate - fabric:



### Material composition \*:



\* according to the EPD document

### Recyclability \*\*

Recycling: 97% - Downcycling: 3%

### Recycled content

34%

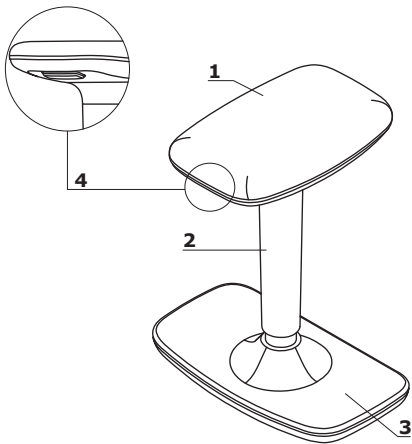
### Co2 carbon footprint

21,9 kg

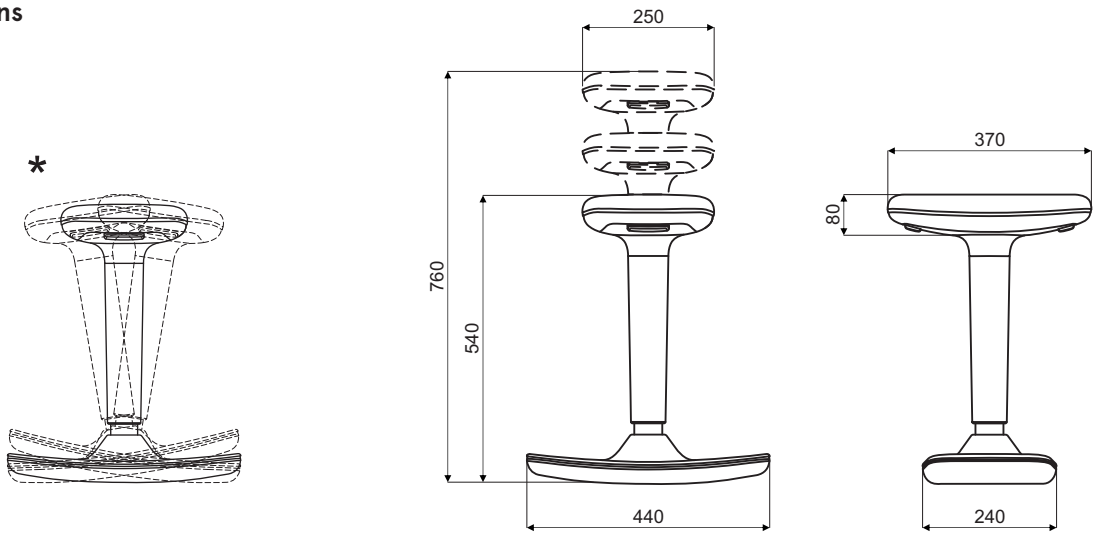
\*\* average values for a representative of the group;  
values may vary for other products

Cool - stool

- 1. **360° Seat** - polypropylene base, molded foam, density of 65 kg/m.<sup>3</sup>, upholstered
- 2. **Gas lift** - polypropylene cover
- 3. **Base** - polypropylene, covered in non-slip rubber
- 4. **Button** - allowing for height adjustment



Dimensions



\* wobble (left, right) +/- 20°

Cool



CL01  
370 / 250 / 760  
5.7 kg

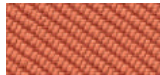
\* dimensions expressed in millimeters: width x depth x height

Cool	Date of preparation 16.12.2022	The data contained in this document is valid in the day of its preparation. Change of the product, as long as it does not affect the basic features of it, does not require consistent updates of the document.	page 5/6
			products

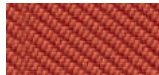
## Fabric Oceanic - third price group



O-16 Pink



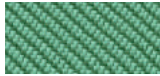
O-05 Coral



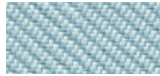
O-12 Red



O-07 Yellow



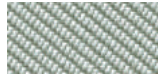
O-04 Light green



O-15 Light blue



O-11 Blue



O-13 Light grey



O-08 Dark grey



O-01 Black

### Technical data:

<b>Material</b>	100% post-consumer recycled polyester
<b>Fabric weight</b>	497g/m <sup>2</sup>
<b>Abrasion resistance rubs</b>	100,000 Martindale cycles (EN ISO 12947-2)
<b>Pilling resistance</b>	EN ISO 12945-2, 5
<b>Light fastness</b>	EN ISO 105-B02, 5
<b>Rubbing fastness</b>	dry: 4, wet: 4, EN ISO 105x12
<b>Flammability</b>	EN 1021, - 1&2 (Cigarette and Match) BS 7176 Low Hazard BS 5852 Ignition Source BS 7176 Medium Hazard

## Base



Black

Cool	Date of preparation 16.12.2022	The data contained in this document is valid in the day of its preparation. Change of the product, as long as it does not affect the basic features of it, does not require consistent updates of the document.	page 6/6
			colours